

HOW DID THE COUNCIL COME ABOUT?

HISTORY AND PURPOSE

Community Developmental Disability Organizations (CDDOs) were established according to the Developmental Disabilities Reform Act of Kansas in 1995.

Each CDDO in Kansas has a council of community members.

The council brings together people in Shawnee County living with mental retardation or a developmental disability, parents/guardians, and community service providers.

The majority of representatives on the Council are individuals receiving services and guardian or parents of persons with MR/DD.

SHAWNEE COUNTY

For more information about the Council contact
Ramona Macek, CDDO Director

2701 S.W. Randolph
Topeka, Kansas 66611

(785) 232-5083

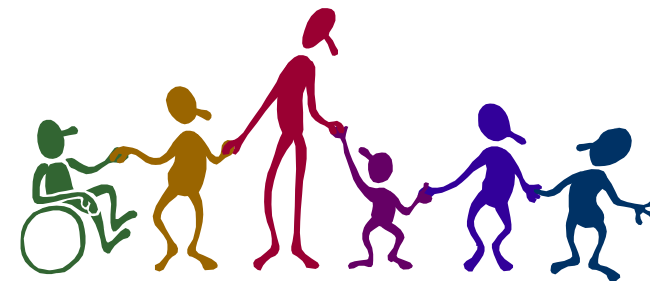
Fax (785) 235-8041

rmacek@snccdo.org

Join the council ...for yourself...
for your community

Shawnee County
Shawnee County

**COUNCIL
OF
COMMUNITY
MEMBERS**



WHAT DOES THE COUNCIL DO?

COUNCIL DUTIES

- Council members are to attend the six scheduled meetings.
- Review Council By-Laws outlining the role and responsibilities of council members.
- The Council is responsible for development and implementation of the dispute resolution procedures.
- The Council is responsible for overseeing the development, implementation and progress reporting as to local capacity building plans, in accordance with guidelines provided.
- The Council has the right to express opinions and make suggestions or recommendations to the CDDO governing board regarding service issues.

WHAT YOU CAN DO

When you join the council:

- Speak up for yourself and for others with developmental disabilities.
- Ask questions and voice your concerns about MR/DD services and supports.
- Be involved with long range planning and make suggestions to the governing board of the CDDO.
- Make a positive impact on the service delivery system.

